



INSTALLATION MANUAL

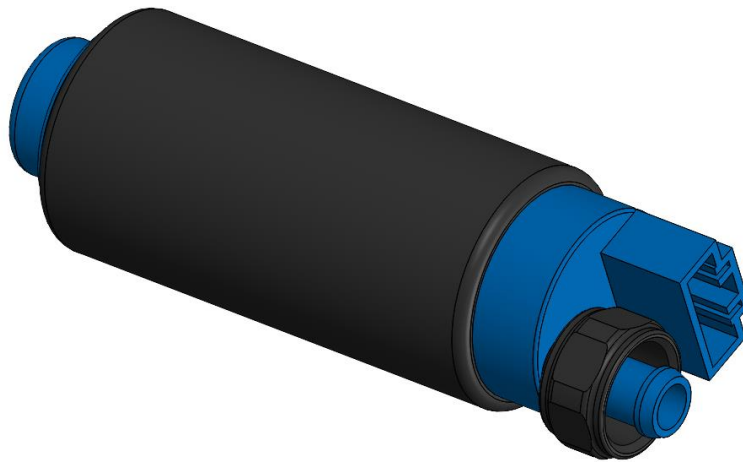
Barb to AN Adaptors

PFE631

Included Items	QTY
PFE631 Barb to AN Adaptor + O-Ring	1

TYPICAL INSTALLATION

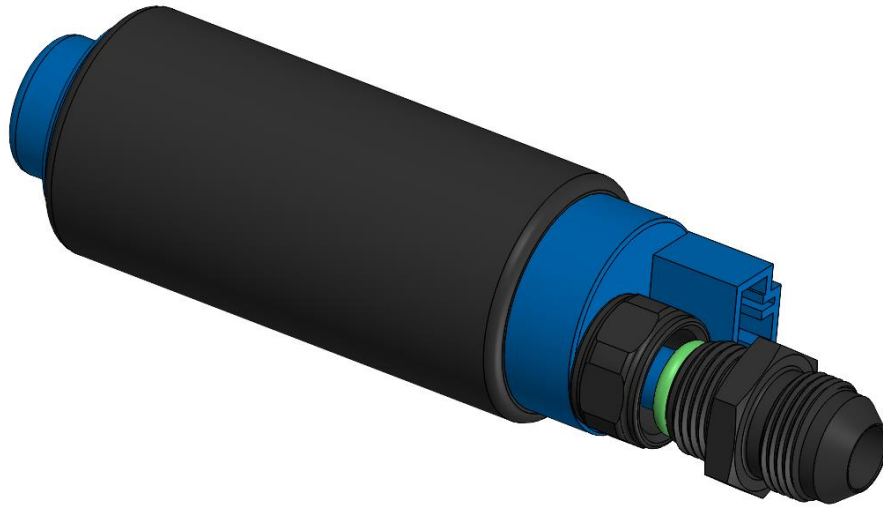
1. Disassemble the fitting and place the nut over the top of the barb as shown below



2. Slide the provided o-ring over the top of the barb and ensure it sits underneath the lowest protruding barb (if there is more than one barb edge), as shown below. Ensure this o-ring is lubricated before proceeding.



3. Slide the AN fitting over the barb until it meets the o-ring and then slide the nut up and begin to fasten the nut.



NOTE: Do not overtighten the nut as only a snug fit is required for sealing. Overtightening can damage the barb and/or o-ring. A gap may also be present between the nut and the bottom of the hex of the fitting which is normal. Gap size may vary depending on variations in barb designs.

