



Installation Manual

Transmission Oil Cooler Kit – Ford Falcon BA

PFEOCBA-KIT



Included Items	QTY
PFEOCBA-KIT Transmission Cooler 280x255x19mm 3/8" Barb	1
Left Hand Side Bracket	1
Right Hand Side Bracket	1
Transmission Pipe Bracket	2
Female Hose Adapter Fitting	6
In-Tank Male Mounting Bung	2
PFE400R-06BK Push Lock Hose 3/8"	2
3/8" Hose Clamps	4
Cable Clamps	2
M6 x 12mm Bolt	1
M8 Nylon Nut	2
M6 Nylon Nut	7
Foam Block & Cable Ties	1

WARNING: PLEASE READ ALL INSTRUCTIONS BEFORE PROCEEDING. PROFLOW WILL NOT BE RESPONSIBLE FOR ANY DAMAGE AS A RESULT OF THE INCORRECT INSTALLATION OF THIS PRODUCT. IT IS RECOMMENDED THAT A QUALIFIED AUTOMOTIVE TECHNICIAN PERFORMS THIS INSTALLATION.

PROFLOW.COM.AU

EMAIL: sales@proflow.com.au
PHONE: 1300 879 879

Typical Installation

Removing Front Shrouds

1. Remove all front shroud brackets located at the front of the vehicle by removing the 4 scrivenets on the upper shroud, 2 bolts located under the shroud, 4 scrivenets and 2 screws located in the wheel well and 5 bolts on the undertray of the fascia.



Figure 1: Removing scrivenets



Figure 2: Removing 2 Bolts

Installing Transmission Cooler

1. This kit utilizes the existing power steering pipe mounting points to locate the transmission cooler brackets. The complete driver side bracket and the retaining rubber on the passenger side should be removed to provide sufficient clearance for the oil cooler brackets.
2. Remove the airbag sensor clip. The upper stud on the bracket locates in the holes located in the body forward of the bonnet latch. There is a hole punched in the supplied bracket to provide an optional locating point for the clip after installation.

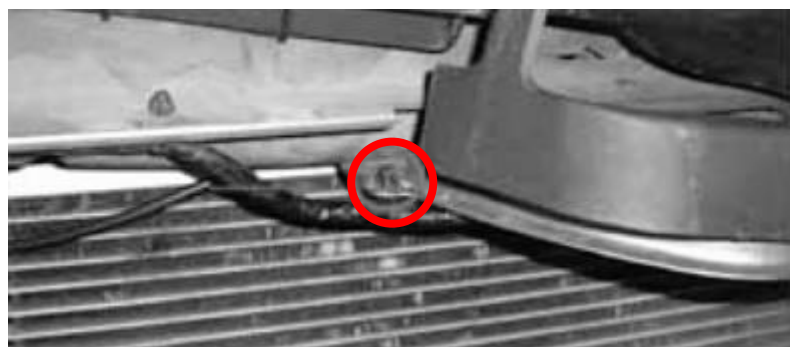


Figure 3: Airbag Sensor Clip

3. Mount the supplied brackets onto the oil cooler as seen in the below figure.
4. Locate the RHS bracket between the RHS power steering mounting bracket and power steering pipe as seen in figure 4.
5. Position the M6 stud at the top of the bracket and into the body fixture forward of the bonnet latch. Start the M6 nut but do not tighten yet to allow for movement.

- Repeat these steps for the LHS bracket. Replace the rubber power steering pipe spacers onto the studs and replace metal saddle and start the nut on the thread but do not tighten to allow for movement or adjustment.

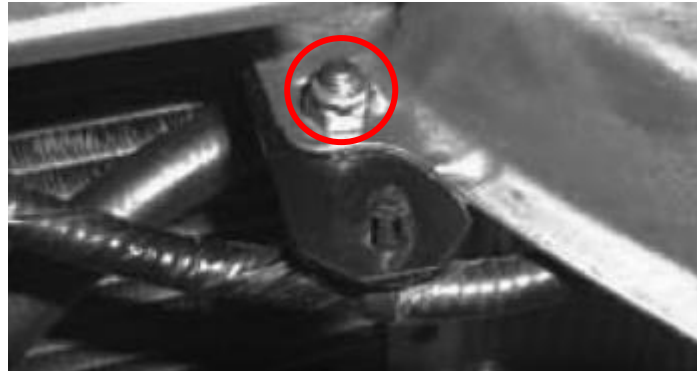


Figure 4: Right Hand Side Bracket Mounted

- Put an adhesive foam block to the RHS bracket to ensure piping does not rub against bracket (4 foam blocks provided).
- Mount the supplied RHS and LHS brackets to the cooler in the orientation shown in figure 5 below, with the barbs facing towards the drivers side.
- Tighten all nuts and bolts on the transmission cooler brackets and power steering mounting points. Reposition the sensor in the front hole of drivers side bracket.

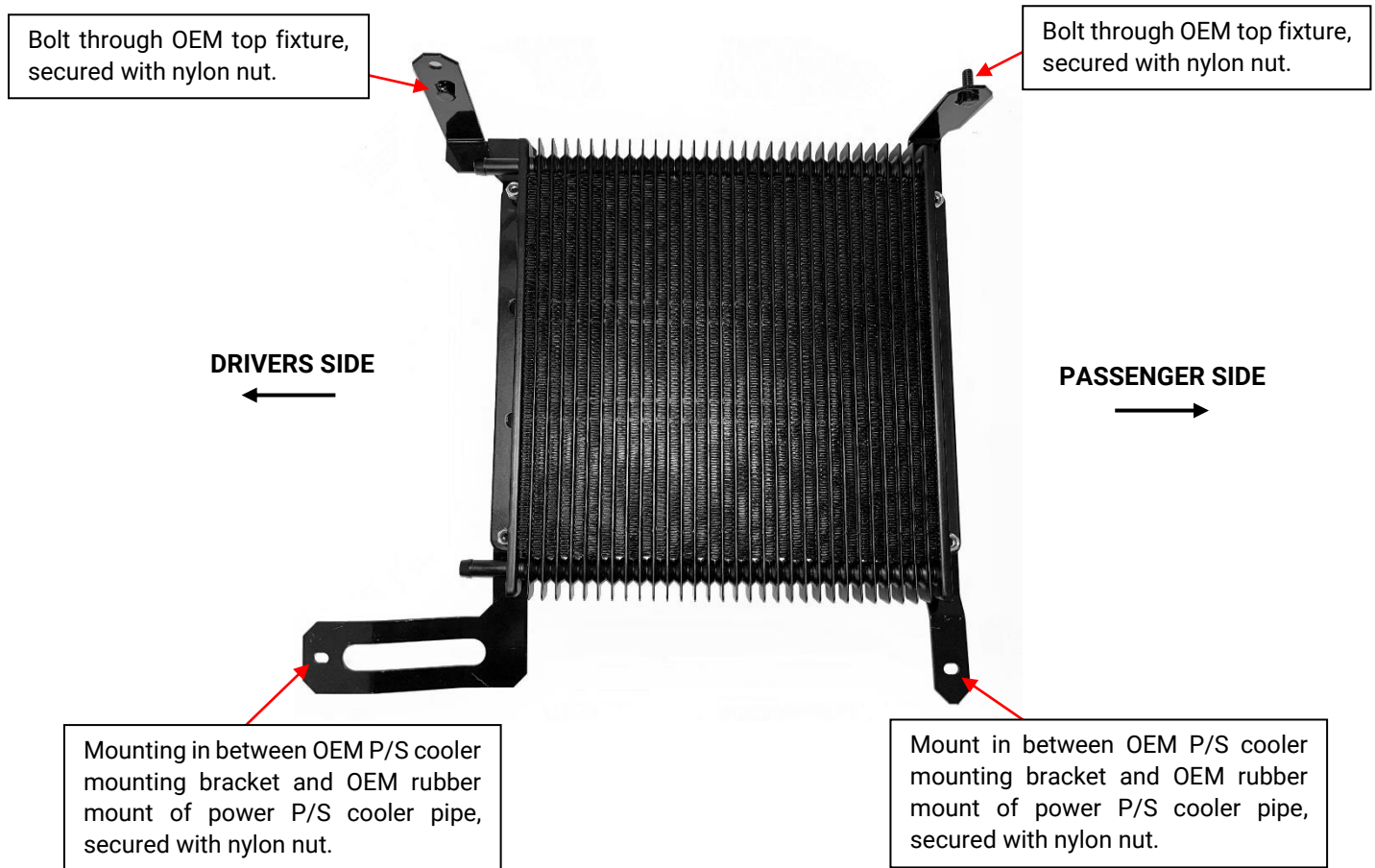


Figure 5: Oil Cooler Mounting Points

Bypassing OEM In-Tank Cooler

1. Remove transmission pipes from the factory in-tank transmission cooler.
2. Screw the supplied mounting bung in and screw the female hose end adapter to the transmission pipe, spacing the fittings out with the transmission pipe bracket. Position these brackets on exposed end of M8 thread side of bung (figure 6).
3. Tighten the M8 nylon nut to supplied in-tank bungs. Position these transmission pipe brackets so that the lines are clear of all hoses and drivetrain components.
4. Secure the 3/8" rubber hose on the hose adapter with the supplied clamps. Repeat this procedure for the transmission fluid return line.

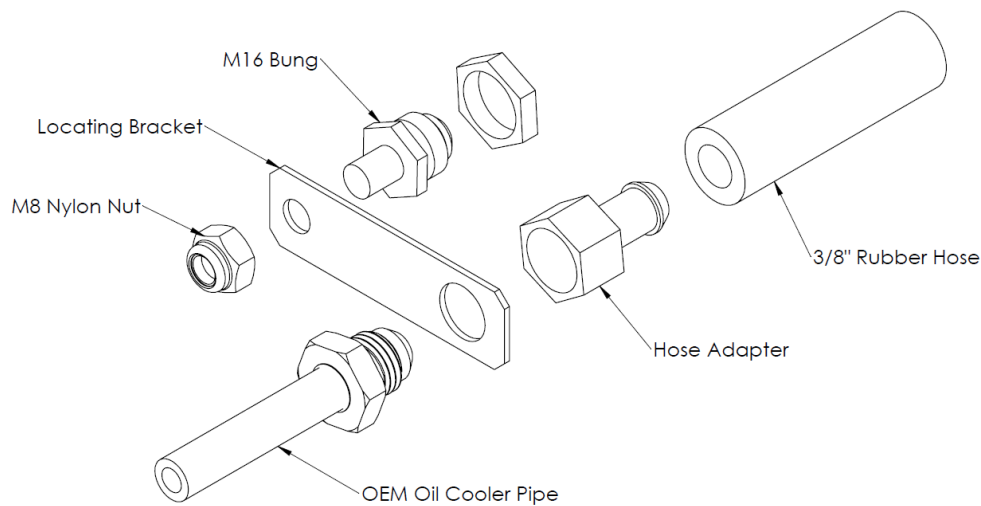


Figure 6: Bypassing Oil Cooler Diagram

Plumbing the Oil Cooler

1. Feed the upper hose through to the transmission cooler, beneath the RHS headlight. Place a hose clamp on the end of the hose and push onto the upper barb of the transmission cooler. Tighten hose clamp.
2. Feed the lower hose through the opening on the bottom right side of the radiator. Place a hose clamp on the end of the hose and push onto the lower barb of the transmission cooler. Tighten hose clamp.
3. Using the provided zip ties and cable clamps, mount the upper and lower rubber hose clear of all hot and moving parts to prevent vibration during everyday driving. The lower rubber hose can be mounted using a bolt on the condenser with one of the cable clamps.

Tighten all connections including all mounting bracket bolts, hose clamps and accessory brackets. Ensure all hoses are clear from moving/hot engine components. The transmission oil system may require a fluid top-up.

Operate engine at idle for roughly 5 minutes and inspect all hoses and fitting connections for leaks. Refit all components previously removed.